



# Roxtec SF -läpivienti ja SE PPS

Läpivienti useille muoviputkille.

Roxtecin SF-kittin SE PPS on Roxtecin perusläpiviennin laajennus useiden muoviputkien läpivientien tulelta suojaamista varten. Tiivisteen ansiosta eri materiaaleista valmistetut putket ja kaapelit sopivat samaan aukkoon. Läpivientikehyksessä on laippa, joka helpottaa epätasaisten aukkojen hitsaamista. Perusmoduulit sopivat erikokoisiin kaapeleihin ja putkiin. Niitä voi käyttää läpiviennin lisäkapasiteetin rakentamiseen.



- Helppo ylläpitää ja tarkistaa

## Tuotteen ominaisuudet



Paloluokiteltu



Vesitiivis



Kaasutiivis

## Asennusrakenne



Metalli

## Asennustyyppi



Hitsaus

## Luokitukset ja sertifiointit

### Paloluokka

- A-luokka IMO 2010 -standardin palokoeoodin (IMO 2010 FTP Code) mukaan

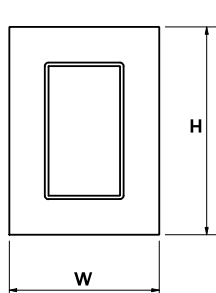
### Tiiviys

- Kaasutiivis: 2,5 bar (katastrofi)
- Vesitiivis: 4 bar (katastrofi)

## Kehyksen mitat

mm/kg

Alla olevat kehysvaihtoehdot ovat vain osa valikoimastamme. Kattava valikoima kehyksiä ja kokoonpanoja löytyy osoitteesta [roxtec.com](https://www.roxtec.com).

	Otsikko	Kehysaukot	Pakkaustila	Ulkomitat WxHxD	Aukon mitat w x h	Paino	Tuotenro
	SF 6x1 ALU	1	120 x 180	260.5 x 358 x 60	201(+15/-15) x 298(+15/-15)	2.9	SFF6000000131
	SF 6x2 ALU	2	120 x 180	391 x 358 x 60	332(+15/-15) x 298(+15/-15)	4.2	SFF6000000231
	SF 6x3 ALU	3	120 x 180	521.5 x 358 x 60	462(+15/-15) x 298(+15/-15)	6	SFF6000000331
	SF 6x1 PRIMED	1	120 x 180	260.5 x 358 x 60	201(+15/-15) x 298(+15/-15)	7.6	SFF6000000112
	SF 6x2 PRIMED	2	120 x 180	391 x 358 x 60	332(+15/-15) x 298(+15/-15)	12	SFF6000000212
	SF 6x3 PRIMED	3	120 x 180	521.5 x 358 x 60	462(+15/-15) x 298(+15/-15)	16.4	SFF6000000312
	SF 6x1 AISI316	1	120 x 180	260.5 x 358 x 60	201(+15/-15) x 298(+15/-15)	8.2	SFF6000000121
	SF 6x2 AISI316	2	120 x 180	391 x 358 x 60	332(+15/-15) x 298(+15/-15)	12.2	SFF6000000221
	SF 6x3 AISI316	3	120 x 180	521.5 x 358 x 60	462(+15/-15) x 298(+15/-15)	16.6	SFF6000000321



# Tiivistyskomponenttien tiedot

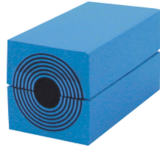
## Tiivistyskomponentit



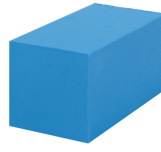
Roxtec-asennusrasva



Wedge ja Wedgekit



RM -moduuli  
Multidiameter™-teknologia  
lla



RM -umpimoduuli



Roxtec-välilevy



SE PPS -vastakehys



Roxtec pidintyökäly



Roxtec kitti



Roxtec-hitsaustyökäly

Lisätietoja on osoitteessa [roxtec.com](https://www.roxtec.com).

The product information provided by Roxtec does not release the purchaser of the Roxtec system, or part thereof, from the obligation to independently determine the suitability of the products for the intended process, installation and/or use.

Roxtec gives no guarantee for the Roxtec system or any part thereof and assumes no liability for any loss or damage whatsoever, whether direct, indirect, consequential, loss of profit or otherwise, occurred or caused by the Roxtec systems or installations containing components not manufactured by an authorized manufacturer and/or occurred or caused by the use of the Roxtec system in a manner or for an application other than for which the Roxtec system was designed or intended.

Roxtec expressly excludes any implied warranties of merchantability and fitness for a particular purpose and all other express or implied representations and warranties provided by statute or common law. User determines suitability of the Roxtec system for intended use and assumes all risk and liability in connection therewith. In no event shall Roxtec be liable for indirect, consequential, punitive, special, exemplary or incidental damages or losses.

The Roxtec products are offered and sold in accordance with the conditions of the Roxtec General Terms of Sales. The latest version of the Roxtec General Terms of Sales can be downloaded from <https://www.roxtec.com/en/about-us/about-roxtec/general-terms-of-sales/>

We reserve the right to make changes to the product and technical information without further notice. Any errors in print or entry are no claims for indemnity. The content of this publication is the property of Roxtec International AB and is protected by copyright.

This document was generated on: 2024-04-05